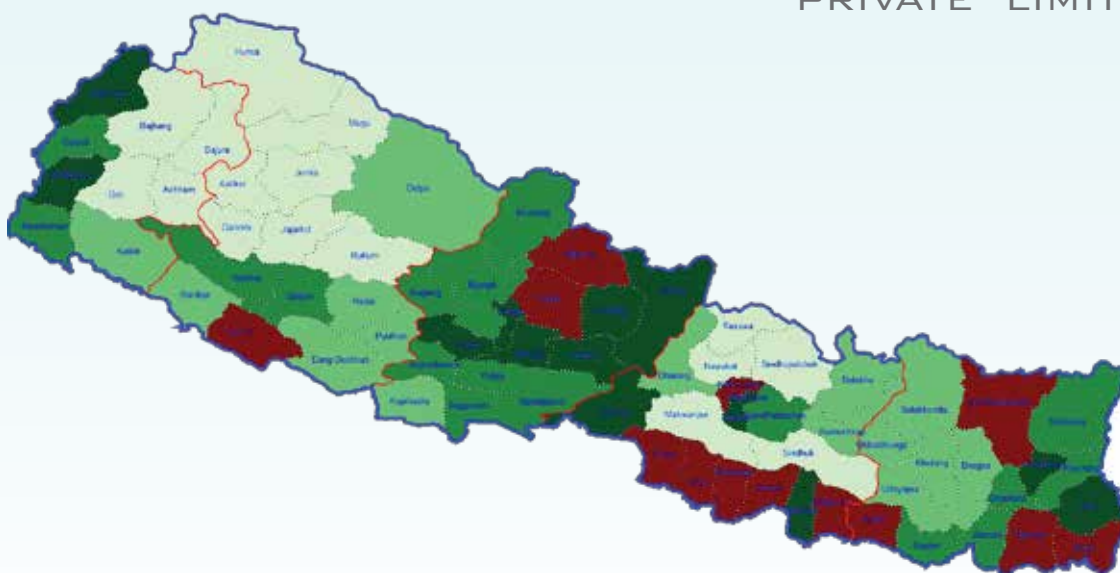


Govt. License No. : 1084/073/074



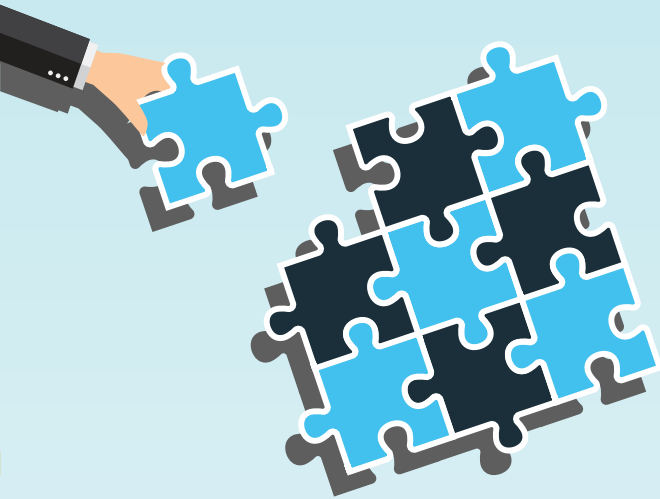
INTERNATIONAL H.R. SOLUTION
PRIVATE LIMITED





INTERNATIONAL H.R. SOLUTION
PRIVATE LIMITED

Mission / Vision



International H.R. Solution aims to be the preferred partner of choice and a premier manpower service provider. Our mission is to provide employment services which benefits our clients and workers to only best job opportunities to the best clients.

To achieve this mission and vision, we have carefully laid out the following strategies back up with our existing resources and comprehensive understanding of the recruitment process.

We have a team of well trained and efficient staff to handle all aspet of manpower mobilization, screening, documentation and recruitment.

Providing our employee with the opportunities to develop and advance commerce and information technology to continuously develop a competetive advantage in the delivery of our services.

Speed up development of high level quality work space and continuously improve our processes to increase our productivity.

Training and developing skills of candidates for our clients manpower requirements.



INTERNATIONAL H.R. SOLUTION
PRIVATE LIMITED

Category We Supply

- Security Guard / Arm Guard
- Supermarket
- Garments & Textile
- Official Personnel Management Group
- Building Structure Maintenance & Construction Group
- Vehicle / Heavy Equipments Operator, Auto Mechanic & Maintenance
- Information Technology
- Engineering



Our Valuable Clients



Our Clients Location



UAE



Kuwait



Qatar



Malaysia



INTERNATIONAL H.R. SOLUTION
PRIVATE LIMITED

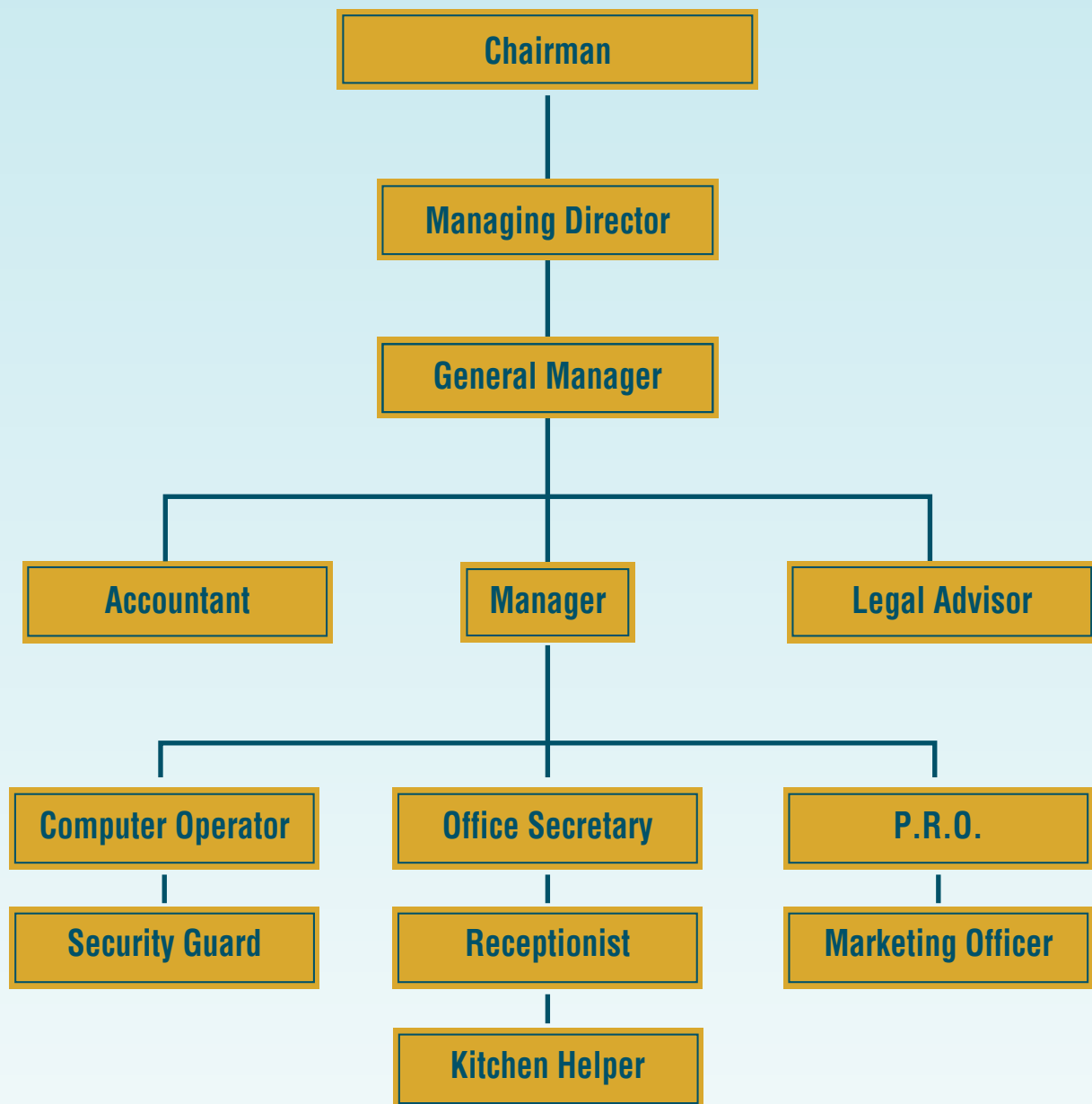
Company Profile

Name of the Company	International H.R. Solution Pvt. Ltd.
Registration Authority	<p>Ministry of Industry & Commerce Office of the Company Registrar Company Registration No: 160269/073/074</p> <p>Ministry of Labour & Transport Management Department of Foreign Employment License No: 1084/073/074</p> <p>Ministry of Finance Department of Internal Revenue</p>
Member	Nepal Association of Foreign Employment Agencies
Chairman	Mr. Bhupendra Bhattarai
Managing Director	Mr. Netra Bhattarai
Capital Structures	<p>Authorized- 20 Million Nepalese Rupees Paid-Up- 15 Million Nepalese Rupees Issued- 15 Million Nepalese Rupees</p>
Official Banks	Prime Bank Ltd.
Working Experiences	<p>Comprehensive background in Implementing and accomplishing Company's mission by working at extensive level in senior management capacity for years in the national and international organizations & overseas employment business fields.</p>
Mailing Address	<p>Sinamangal-9, Kathmandu, Nepal Tel.: +977-1-4110850, 4110713 E-mail: internationalhr1084@gmail.com URL: www.internationalhr.com.np</p>



INTERNATIONAL H.R. SOLUTION
PRIVATE LIMITED

Organization Chart





INTERNATIONAL H.R. SOLUTION
PRIVATE LIMITED

License & Certificate





INTERNATIONAL H.R. SOLUTION
PRIVATE LIMITED

About Nepal

Location :	Southern Asia, between China and India
Geographic coordinates:	28° N, 84° E
Map references:	Asia
Area:	Total : 147,181 Sq Km Land : 143,181 Sq Km Water: 4,000 Sq Km
Area comparative:	Slightly larger than Arkansas
Land boundaries:	Total : 2,929 km border countries: China 1,236 km , India 1,690 km
Coastline:	0 km (land locked)
Maritime claims :	None (land locked)
Climate:	Varies from cool summers and severe winters in north to subtropical summers and mild winters in south
Terrain:	Terai or flat river plain of the Ganges in south , central hill region, rugged Himalayas in north
Elevation extremes:	Lowest point: Kechana Kalan 70 m high est point: Mount Everest 8,850 m
Natural resources:	Quartz, water, timber, hydropower, scenic beauty, small deposits of lignite, copper, cobalt , iron ore
Land use:	Arable land : 21.68%, permanent crops : 0.64%, other: 77.68% (2001)
Irrigated land:	11,350 sq km (1998 est.)
Natural hazards:	Severe thunderstorms, flooding , landslides, drought , and famine depending on the timing , intensity, and duration of the summer monsoons
Environment :	Deforestation (overuse of wood for fuel and lack of alternatives)
Current issues:	Contaminated water (with human and animal wastes, agricultural runoff and industrial effluents); wildlife conservation; vehicular emissions.
Environment-party to:	Bio-diversity, Climate Change, Desertification , Endangered Species, Hazardous Wastes, Law of the sea, Ozone Layer Protection .
International agreements:	Tropical Timber 83, Tropical Timber 94, Wetlands signed , but not ratified: Marine Life Conservation .
Geography Note:	Land locked; strategic location between China and India; contains eight of world's 10 highest peaks, including Mount Everest (the world's tallest) on the border with China





INTERNATIONAL H.R. SOLUTION

PRIVATE LIMITED

- 📍 Sinamangal-9, Kathmandu, Nepal
- ☎ +977-1-4110850, 4110713
- ✉ internationalhr1084@gmail.com